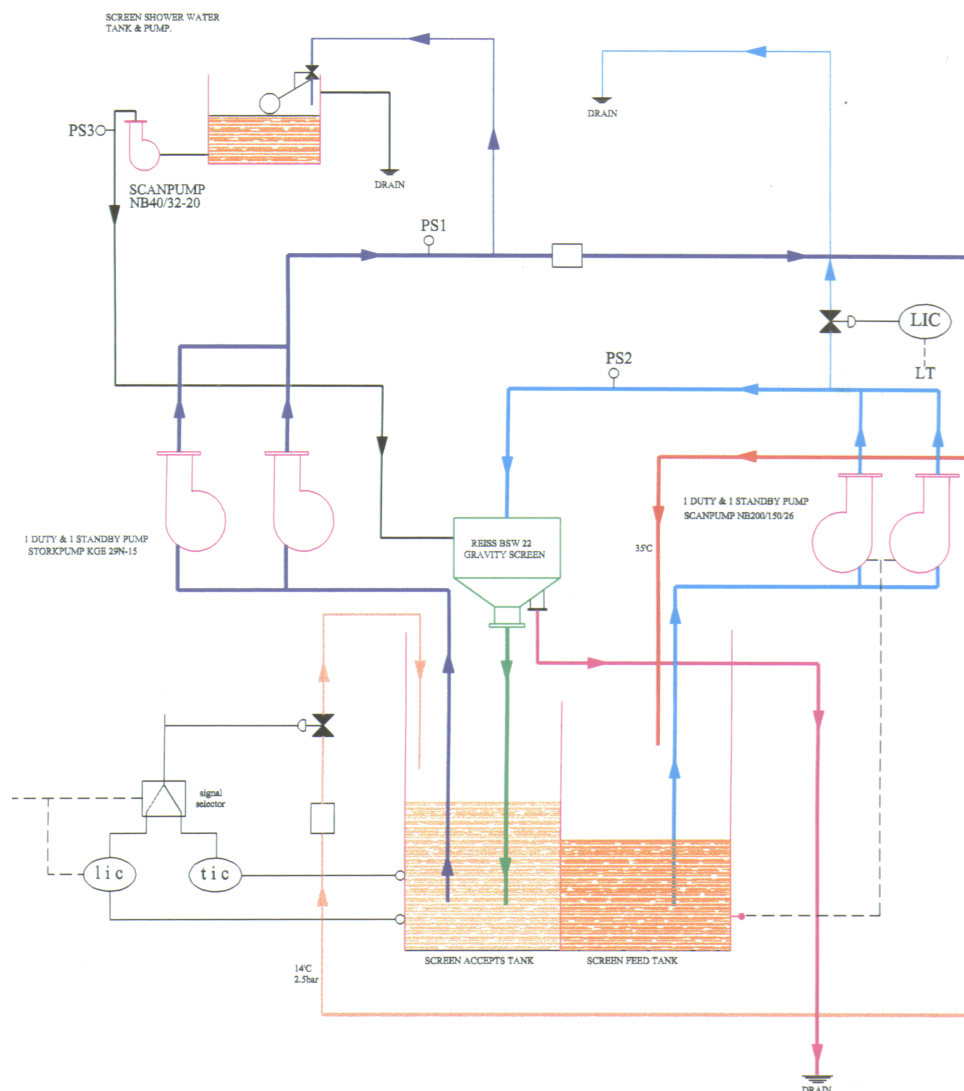


Water Conditioning Plant Design for Paper Mill

Our client had a requirement to reduce loading on the mill's effluent plant. The solution was to re-cycle a significant proportion of the gland sealing water for the vacuum pumps. This was achieved by re-circulation through a filter and direct cooling with a fresh water supply (see line diagram below). Pre-owned pumps of similar size to that required were to be used.



The design challenge was to ensure that appropriate pump impeller design and valve sizes were selected to obtain the specified operating points and dynamic performance. Of specific concern were the controllability of water temperature and levels in the two vessels within the plant. Traditional design methods concentrate on static operating conditions. However, *dynamic behaviour determines stability* and tests the physical limits of the plant.

